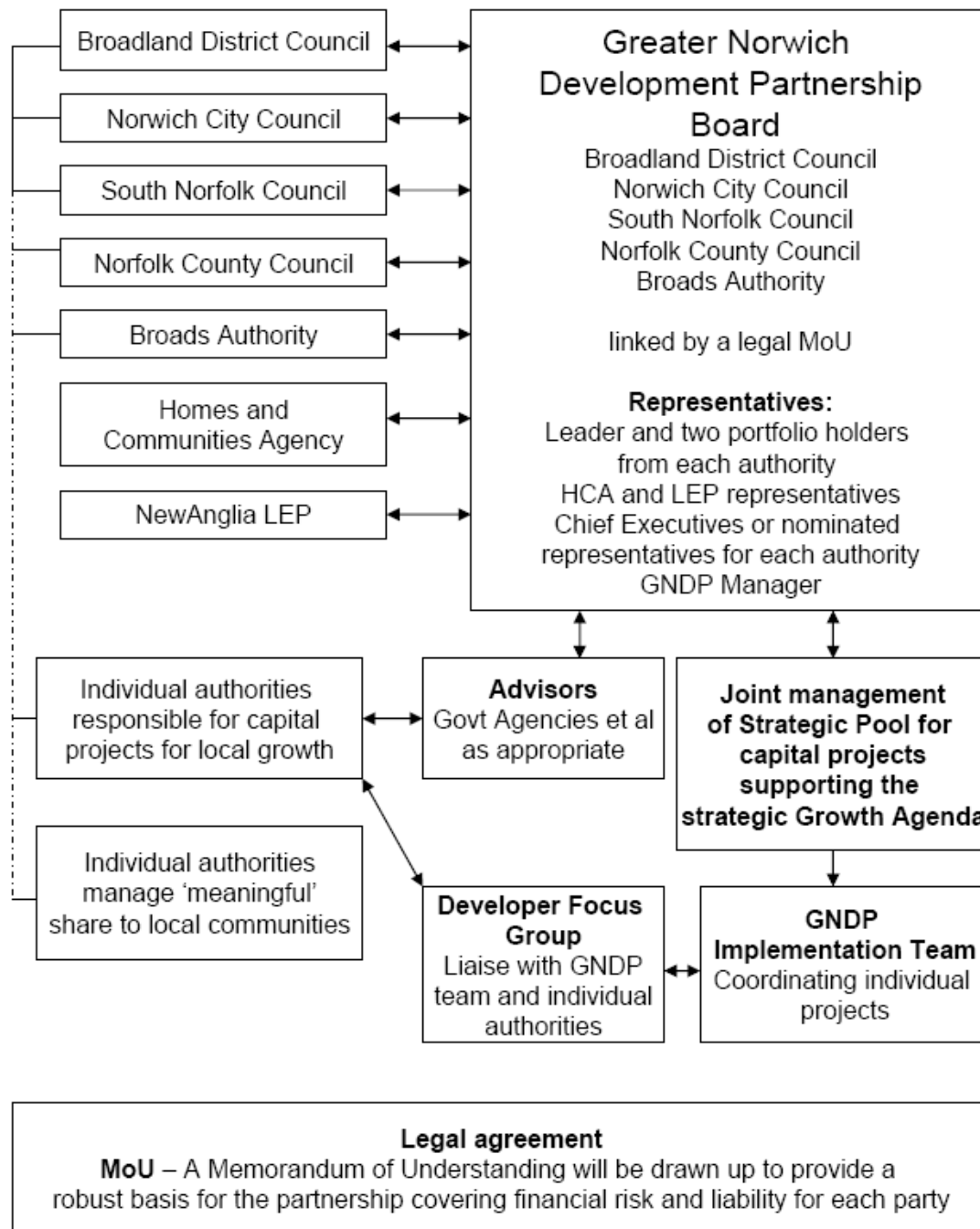


# Greater Norwich Development Partnership

## Governance and Support Arrangements for the Greater Norwich Development Partnership

A **structure diagram** for the governance and support arrangements is set out below:



NORWICH City Council



Norfolk County Council



Broads Authority  
 The Broads - a member of the National Park family

working together as the Greater Norwich Development Partnership

**Key objectives** for the GNDP Board (to be reviewed on a regular basis as the partnership evolves):

### **Infrastructure Planning**

- To prepare and keep under review a Local Investment Plan and Programme (LIPP) setting short medium and long term infrastructure requirements and examining funding sources
- To prepare an 5-year Investment Programme, reviewed annually for strategic pool of Community Infrastructure Levy and other funding
- To monitor delivery and phasing of the investment programme and report on progress

### **Delivery**

- to bring forward proposals for the introduction of a Community Infrastructure Levy across the area
- to bring forward proposals for a shared strategic infrastructure fund (strategic pool) to be used to support the delivery of key strategic infrastructure capital projects identified in the LIPP
- to monitor progress of capital projects included in the strategic pool
- to pursue opportunities to maximise external funding in support of delivery objectives

### **Monitor and review**

- To monitor and review the Greater Norwich Economic Strategy.

### **Spatial Planning**

- To monitor the Joint Core Strategy and to make recommendations to Councils about the need for a full or partial review
- Assist with the discharge of any duty imposed by the localism act for co-operation in relation to planning of sustainable development

### **Advocacy**

- To work with the NewAnglia LEP, HCA, other relevant bodies and private sector to prepare, promote and support bids to secure external funding to the benefit the area

**NOTE:** This governance structure will require each individual Authority to take responsibility for managing the non-pooled portion of CIL delivering Local and Community infrastructure for their geographical area, consulting, liaising and procuring the infrastructure and spending/monitoring.

## **Membership**

Three representatives from Broadland, Norwich, South Norfolk, Norfolk County Council, to be determined by each Authority

One representative from the Broads Authority

One representative from Local Enterprise Partnership

One representative from the Homes and Community Agency

## **Supported by the GNDP Officer Group**

One Chief Executive or nominated representative from each authority

GNDP Manager

Others to attend by invitation

## **Supported by the GNDP Team**

The GNDP implementation team will support the GNDP Board and the GNDP Officer Group

## **Decision Making**

The meetings of the GNDP Board will be held in public, the meeting will not be opened up to allow public questions.

As it is not a formally constituted Joint Committee the GNDP Board will not have delegated powers therefore all recommendations from the partnership will require endorsement by the individual authorities.

## **Meeting Frequency**

Meetings will be held four-monthly, or more frequently if required. Local Committee clerks will provide support and organisation as per previous arrangements.

